

# About LAMPIRE



*"Providing educational opportunities in the life sciences is critical to workforce development. I believe this talented pool of employees will drive the future of diagnostic and pharmaceutical research. At Lampire, we are passionate about what we do. At every opportunity, we share that passion and experience with the next generation."*

**Gregory F. Krug, President**  
Lampire Biological Laboratories

Lampire is a privately held, international, biotech life science company that produces biological reagents used in the diagnostic and pharmaceutical industries. President, Gregory F. Krug and his family of longstanding employees, have built Lampire to the thriving company it is today.

Employing over 140 team members, Lampire manages over 600+ acres spanning multiple laboratories and farms. Lampire houses more than 5,000 animals representing over 20 species and employs animal and laboratory technicians with extensive experience and training in their respective fields.

Beyond the laboratory, Lampire is active in the community, supporting life science education programs and workforce development at both the local and state level. Founded in 1977, the products and services Lampire provides have impacted human and animal health around the world for over 40 years.

**FAST FACT**  
**Over 75% of orders**  
**are customized to meet**  
**client specifications**

## LAMPIRE ADVANTAGE

- ✓ Over 40+ years of industry technical experience and recognition
- ✓ Customized protocols, collection, processing and specifications
- ✓ Competitive pricing, from research sized to bulk quantities
- ✓ Knowledgeable and responsive sales and customer service staff
- ✓ Quality driven cGMP production
- ✓ Consistent, high-quality and reproducible products
- ✓ ISO 13485:2016 certification and AAALAC accreditation
- ✓ Extensive diversity of animal donor models, exceeding 20 species
- ✓ Technically trained, engaged and responsive project managers
- ✓ Prompt turnaround from inquiry to initiation
- ✓ EU compliant products available for international shipping



\*Proud to be part of Team Lampire, the people shown in this brochure are employees – 07.31.19

orders@lampire.com • www.lampire.com • (215) 795-2838



# LAMPIRE BIOLOGICAL LABORATORIES SNAPSHOT

LAMPIRE specializes in custom polyclonal & monoclonal antibody development, secondary antibodies, IgGs, BSA, animal blood, tissues & organs, normal & disease state human serums & plasmas, cell media, OMNI C3<sup>®</sup> cell culture bags & contract manufacturing.

Our technical support services include free antigen review & design, peptide synthesis, purification, custom conjugation & immunoassay development. LAMPIRE is an ISO and AAALAC accredited, US manufacturer of high-quality, competitively priced products & services that ship around the world.

**FAST FACT**  
**>99% Customer**  
**Responsiveness Rating\***

\*Based on scorecards received from top 500 life science companies

## Technical Expertise



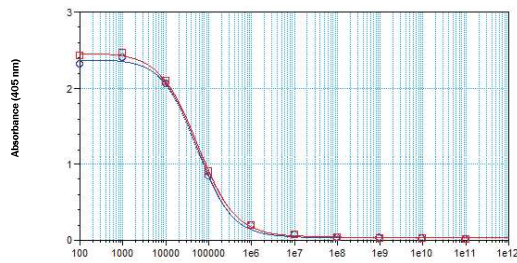
- Customer Service Focused
- AALAS Trained Animal Care Team
- Experienced Business Development Division
- Scientifically Trained QA Department
- Detail-Oriented, Solution Driven Team Members





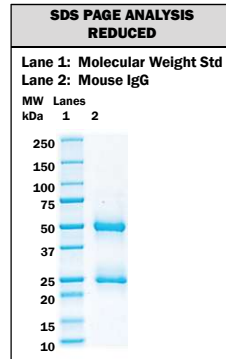
- Fast, quality response time with reproducible results
- On-site manufacturing & immunochemistry testing
- Cost-effective customization capacity
- Technological support services & innovative collaboration
- Contract manufacturing of custom processes

**Rabbit Polyclonal Project: Fast, Quality Titer Response in 30 Days**

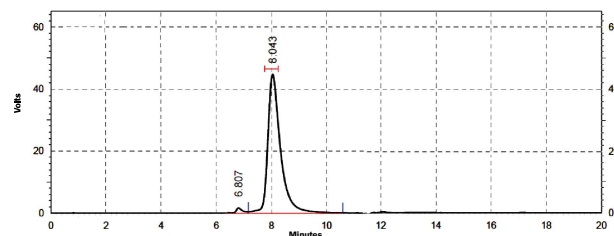


4-P F.E.  $y = (A - D) / (1 + (x/C)^B) + D$

	A	B	C	D	Eq2
● Rabbit A Dilution vs Mean Result	2.38	1.07	5.58e+04	0.0305	0.999
● Rabbit B Dilution vs Mean Result	2.47	0.991	5.66e+04	0.0354	1



**Mouse IgG: High-Quality, Lot-to-lot consistency**



HPLC Results				
PK #	Name	Retention Time	Area	Area Percent
1	Dimer	6.807	115838	1.97
2	IgG	8.043	5775498	98.03
Totals			5891336	100.00

**FAST FACT**  
60% Products  
40% Services

## LAMPIRE PRODUCTS

### Biological Products

- Animal Blood, Tissue & Abattoir
- Human Material & Blood

### Custom Antibodies

- Polyclonal
- Monoclonal
- Conjugation Services

### Purified Proteins

- Primaries & Secondaries
- BSA
- Reagents

### Specialty Products

- Cell Culture Media
- Contract Manufacturing
- Cell Culture Bags

## FAST FACT



**>20 Unique Species**

Animal Whole Blood, Serum & Plasma



- 60 unique vivariums
- Six separate locations
- Expansion Capacity
- State-of-the-art laboratories
- 600+ acres
- Quarantined areas
- Certified class 2, 5 & 7 rooms/hoods
- Specialty tissue & blood product processing
- ISO 13485 Certified & AAALAC Accredited



**FAST FACT**  
**Continual reinvestment to expand technology & manufacturing capacity**

\*Lampire added an additional 180+ adjacent acre property in Everett

## Quality Management System

**FAST FACT**  
**>99% Quality & On-Time Delivery Rating\***

\*Based on scorecards from top 500 life science companies

- Reproducibility
- Consistency
- Responsiveness
- High-level performance

