

# CUSTOM Antibodies

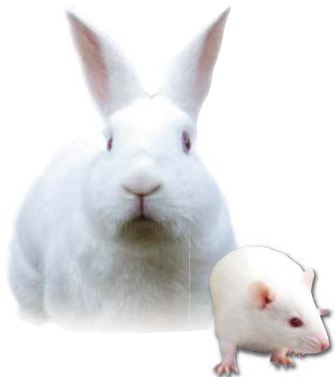
**We're Not Just Anybody... We're Antibodies!®**

## ***Polyclonal & Monoclonal***

- **Flexible**
- **Cost Effective**
- **cGMP/GLP Compliant**
- **High-Quality Antibodies**
- **Large volume capabilities**
- **Peptide Synthesis available**
- **Standard and Custom Protocols**
- **Personalized Project Management**

**Avian • Bovine • Camelid • Equine • Rodent  
In-Vitro & In-Vivo • Full line of Antibody Support Services**

**For assistance in choosing the most effective protocol  
contact us at [antibodies@lampire.com](mailto:antibodies@lampire.com)**



**LAMPIRE**  
BIOLOGICAL LABORATORIES

**[www.lampire.com](http://www.lampire.com)**

AAALAC • FDA • EC/EU • NIH-OLAW • USDA



**THE WORLD'S CHOICE FOR REAGENTS AND CUSTOM ANTIBODIES**